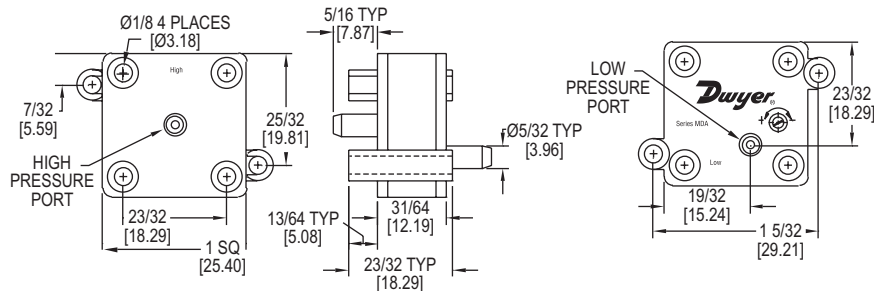
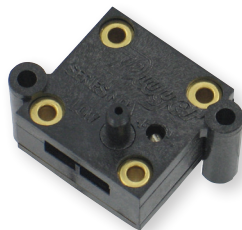


MINIATURE ADJUSTABLE PRESSURE SWITCH

Adjustable Set Points from 0.1 to 100 in w.c.



Series MDA Miniature Adjustable Pressure Switch is used to sense differential pressure. The switch features field adjustable set point and gold inlay contacts. The lightweight and compact size make the MDA ideal for any application with space constraints. Applications include industrial, HVAC, pump and motor control, medical, automotive, pools and spas.

FEATURES/BENEFITS

- Air or fluid on high side permits multiple uses where both air and liquids exist
- Small and lightweight for applications where space is constrained
- Gold contacts help ensure a clean connection without dirt or oxidation

APPLICATIONS

- Industrial
- Medical
- HVAC
- Pump and motor control
- Automotive
- Pools and spas

MODEL CHART		
Model	Min. Set Point in w.c. (mbar)	Max. Set Point in w.c. (mbar)
MDA-011-T	0.1 (0.25)	0.5 (1.25)
MDA-111	0.5 (1.25)	2.0 (4.98)
MDA-211	2.0 (4.98)	15 (37.37)
MDA-311	15 (37.37)	60 (149.3)
MDA-411	60 (149.3)	100 (249.10)

SPECIFICATIONS

Switch Type: SPST normally open.

Switching Media: Air (compatible fluids on "high" side).

Pressure Limits: MDA-0XX: 4 psi; MDA-1XX: 8 psi; MDA-2XX: 8 psi; MDA-3XX: 15 psi; MDA-4XX: 30 psi.

Current Rating: 40 mA resistive; Cycle life: More than 20 million cycles.

Operating Temperature: 40 to 150°F (4 to 66°C).

Storage Temperature: -46 to 150°F (-43 to 66°C).

Contacts: 18K gold inlay.

Electrical Connections: Terminals - 0.187" x 0.20: spade (recessed) for use with quick disconnects.

Pressure Connections: Smooth port 5/32" diameter for 1/8" ID tubing.

Housing: Polycarbonate.

Diaphragm Material: Polyurethane (MDA-0XX: PTFE).

Operating Voltage: AC/DC - 30 V or less with resistive load.

Mounting: Use #4 screws through mounting lugs or #2 screws through eyelets.

Weight: Less than 0.353 oz (10 g).

